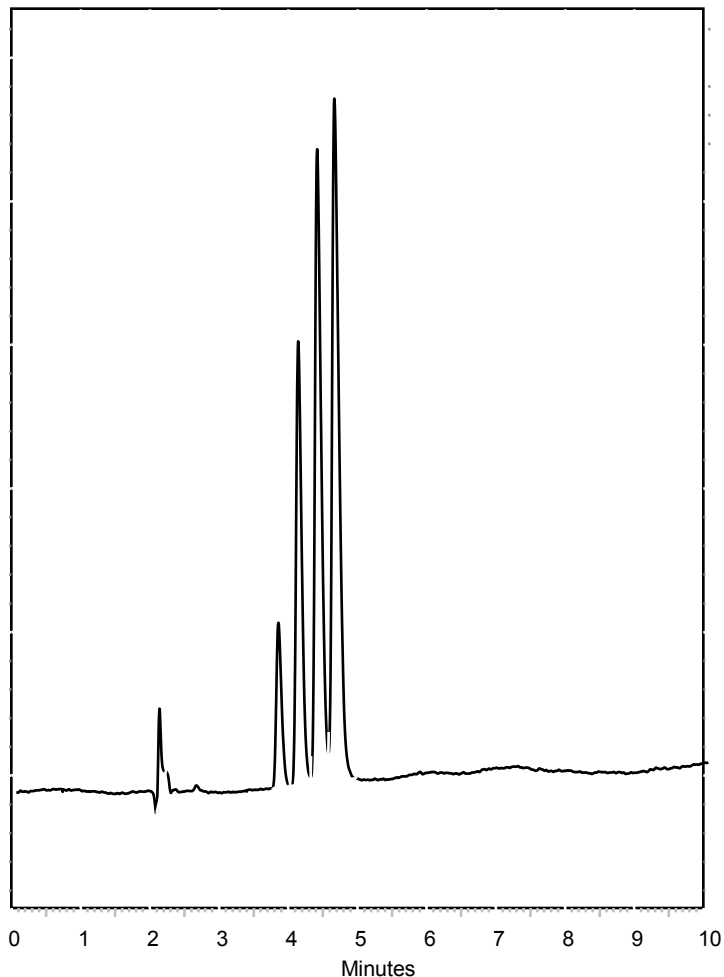


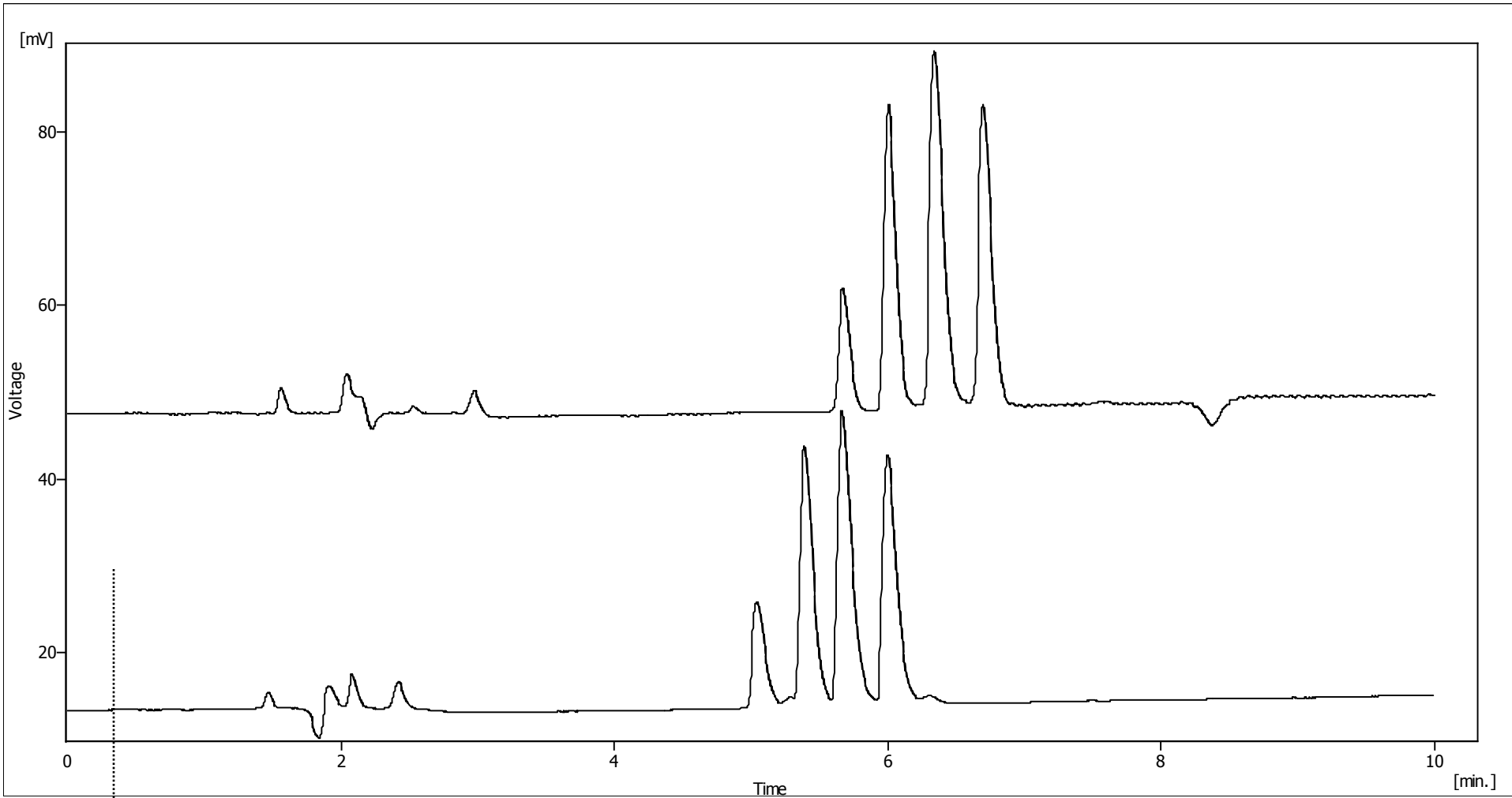
Tricyclic Antidepressants



- Column : **Fortis C18 100x4.6mm 3 μ**
- p/n : **F18-050503**
- Mobile Phase:
 - A - H₂O + 0.1% Formic acid**
 - B - ACN + 0.1% Formic acid**
- Gradient: **25 – 40% in 10min**
- Flow : **1ml/min**
- Temp : **20°C**
- λ : **254nm**

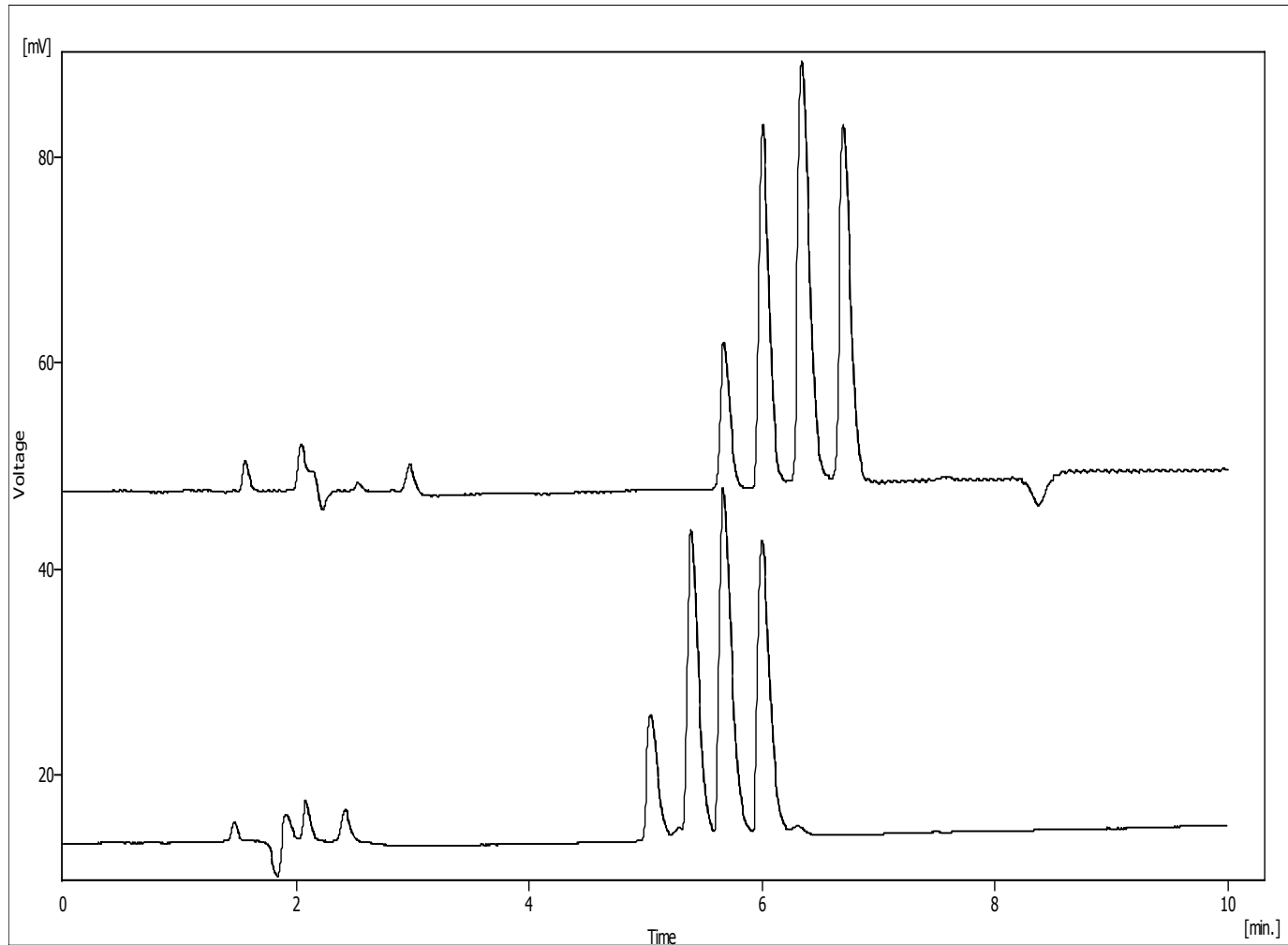
- 1. Protriptyline**
- 2. Nortriptyline**
- 3. Amitriptyline**
- 4. Trimipramine**

Fortis vs Luna



Strength in Technology

Fortis vs Luna



Strength in Technology