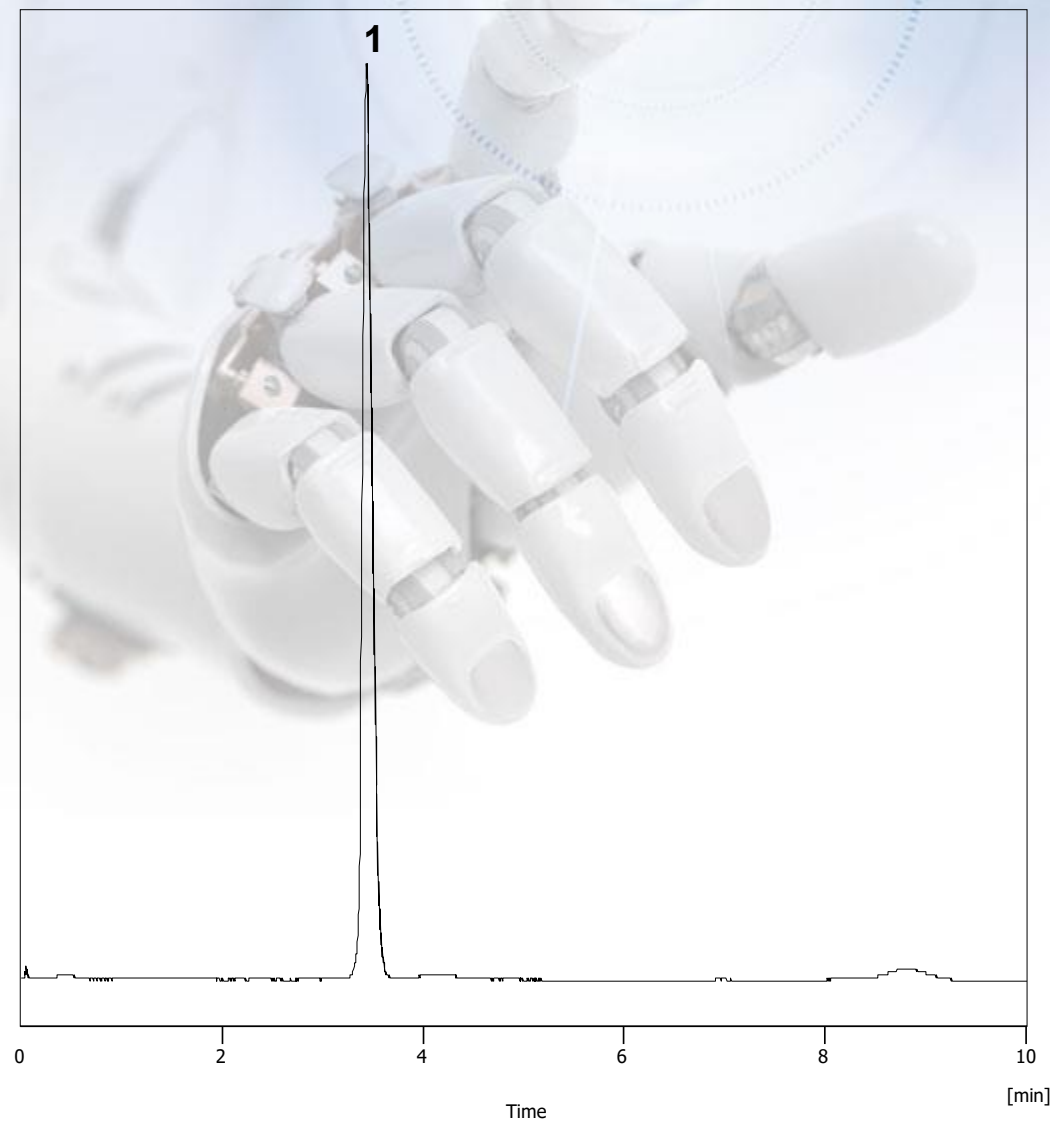


# Salbutamol



- Column : **Evosphere C18/AR**  
**150x4.6x5 $\mu$**
- p/n : **EVO18AR-050705**
- Mobile Phase: **80:20 0.1% Phosphoric Acid:MeOH**
- Flow : **1.0 ml/min**
- Temp : **AMB**
- $\lambda$  : **230nm**

## 1. Salbutamol

