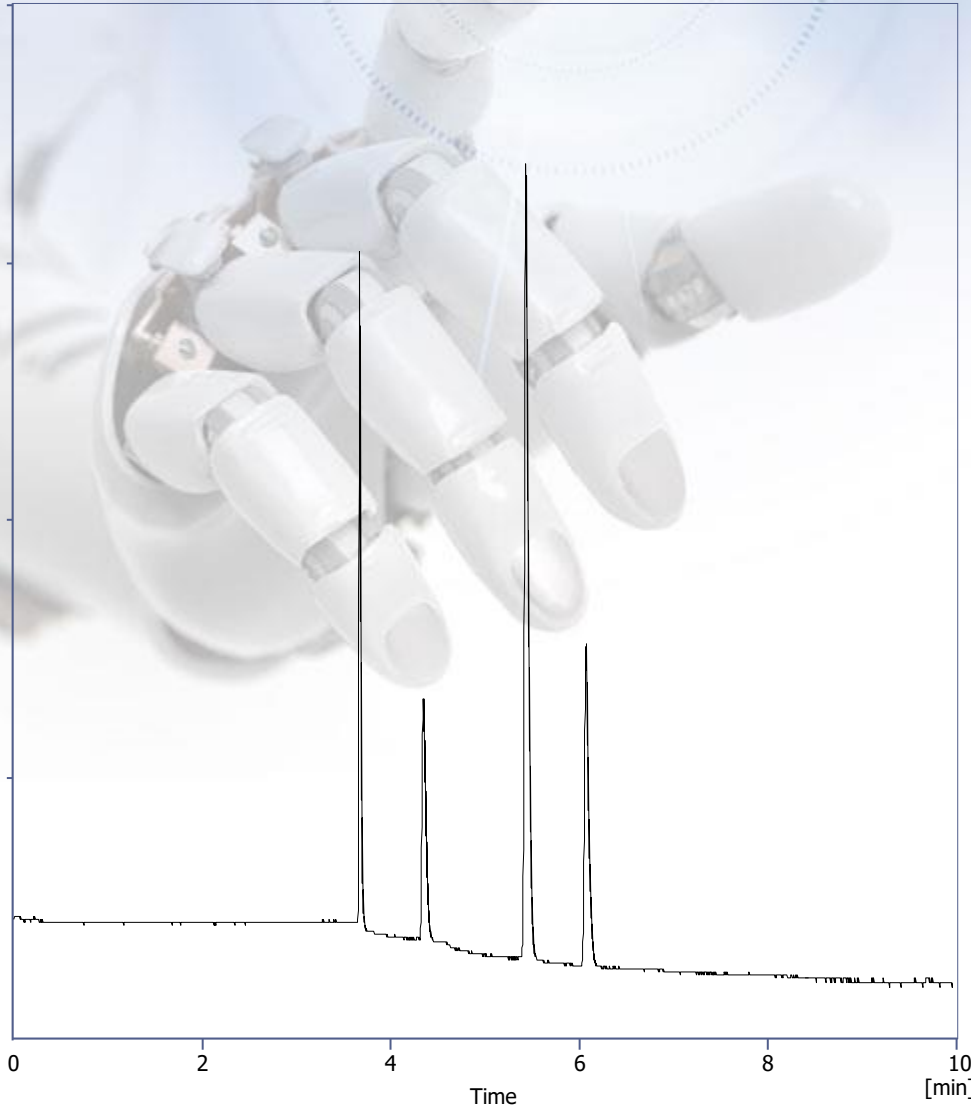


# Catecholamines



- Column : **Evosphere AQUA 150x4.6 3um**
- p/n : **EVOAQ-050703**
- Mobile Phase:
  - A-0.1% Formic acid in Water**
  - B- 0.1% Formic acid in ACN**
  - 0-70% B in 10 mins**

- Flow : **1.0 ml/min**
- Temp : **20°C**
- $\lambda$  : **270nm**

- 1. Dopamine**
- 2. Serotonin**
- 3. DOPAC**
- 4. 5-HIAA**

