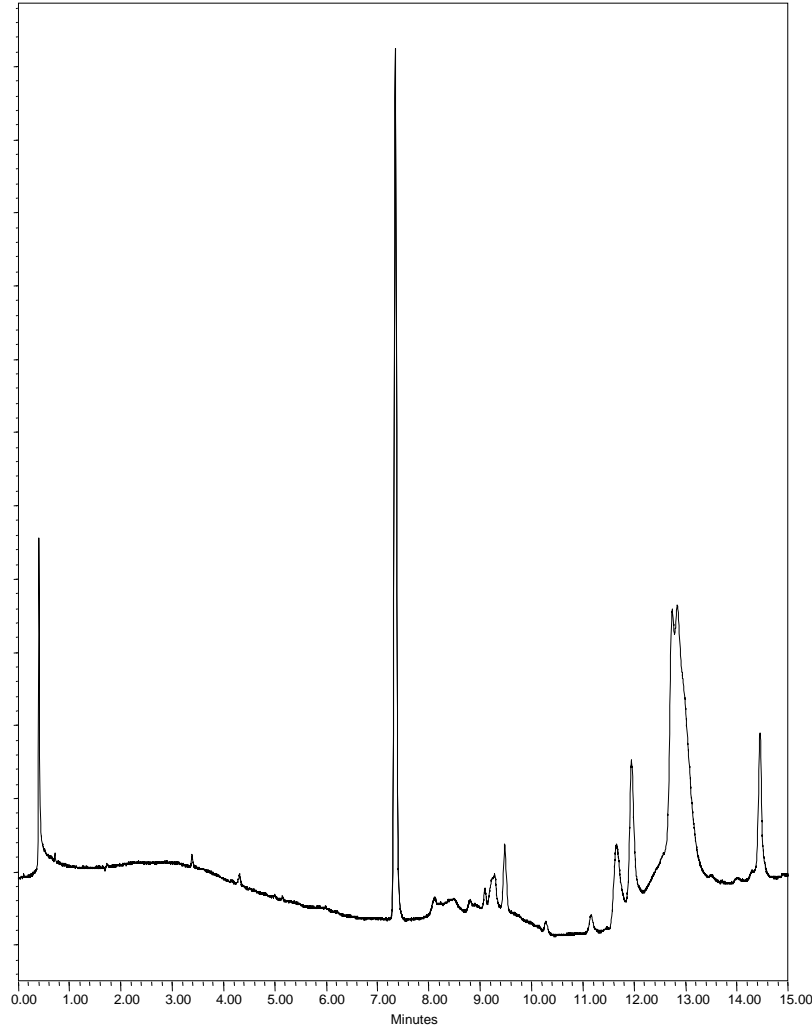


Tamiflu



Column : **3 μ Fortis C18**
100x4.6mm

p/n : **F18-050503**

Mobile Phase: **A: H₂O + 0.1% NH₃**
B: ACN + 0.1% NH₃

Gradient: **10-100% in 15 minutes**

Flow : **1.0ml/min**

Temp : **20°C**

λ : **254nm**

1. Tamiflu - Oseltamivir