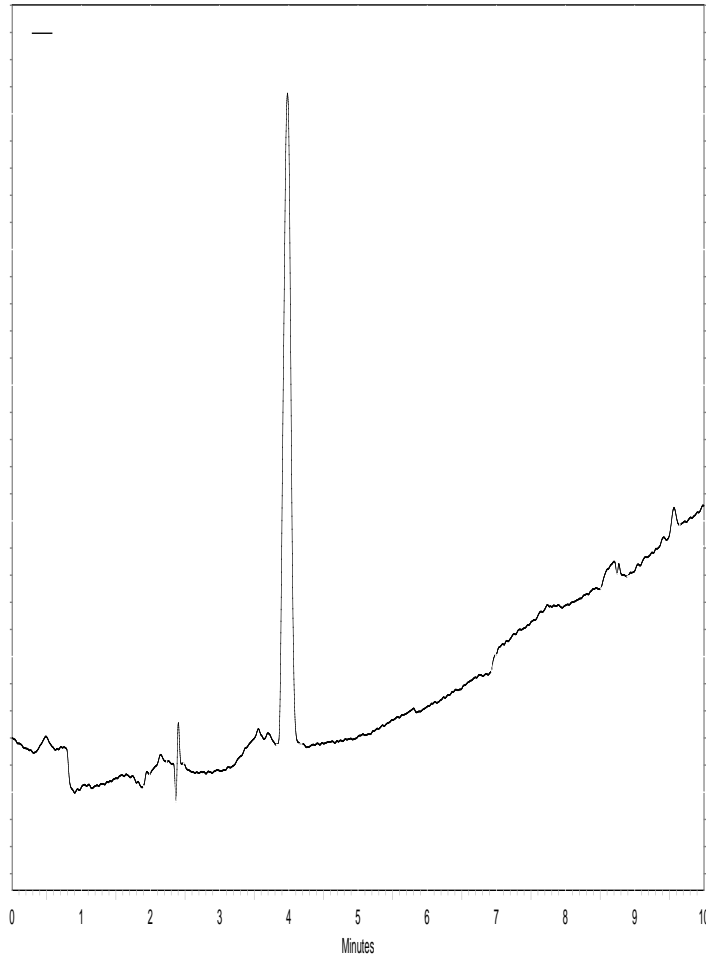


Sotalol



Column : **5 μ Fortis H₂O
150x4.6mm**
p/n : **FHO-050705**

Mobile Phase:

A – H₂O + 0.1% Formic acid
B – ACN + 0.1% Formic acid

Gradient: **5-100% in 10 minutes**

Flow : **1.0ml/min**
Temp : **20°C**
 λ : **254nm**

1. Sotalol