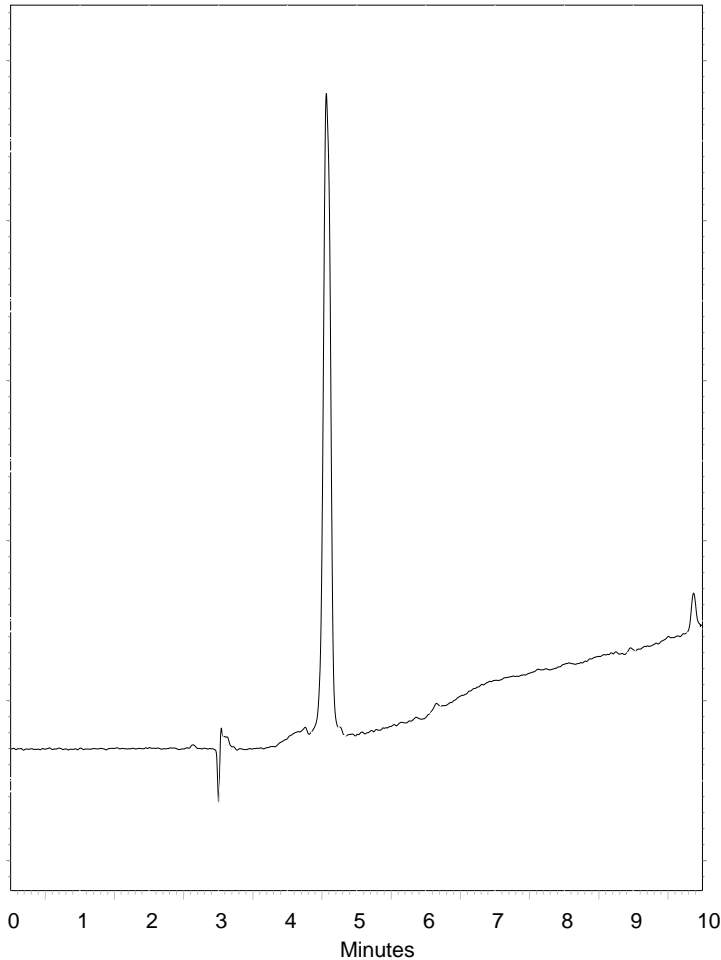


# Sotalol



Column : **5 $\mu$  Fortis C18**  
**150x4.6mm**

p/n : **F18-050705**

Mobile Phase:

**A – H<sub>2</sub>O + 0.1% Formic acid**

**B – ACN + 0.1% Formic acid**

Gradient: **5-100% in 10 minutes**

Flow : **1.0ml/min**

Temp : **20°C**

$\lambda$  : **254nm**

**1. Sotalol**