

Olanzapine

Column : **2.6 μ SpeedCore C18**
100x2.1mm

p/n : **SP18-020526**

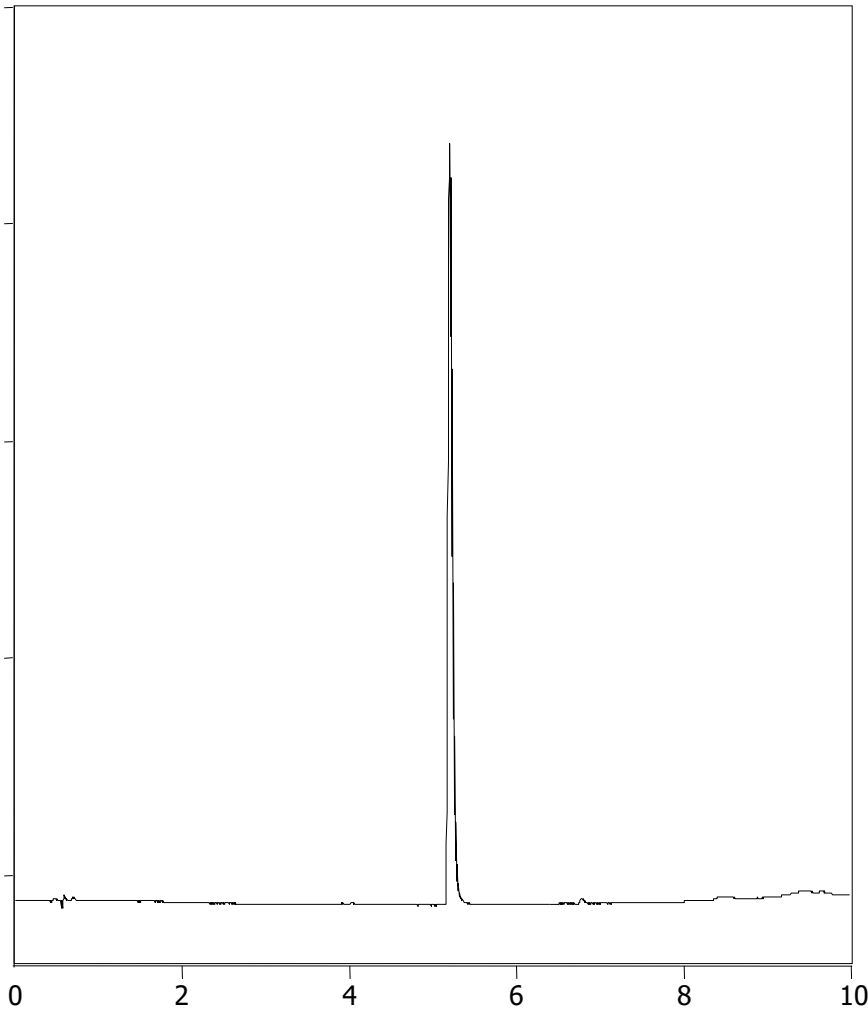
Mobile Phase: **A: 25mM NH₄OAc**
B: ACN

Gradient: **10-90% B in 10minutes**

Flow : **0.4ml/min**

Temp : **25°C**

λ : **254nm**



1. Naproxen

