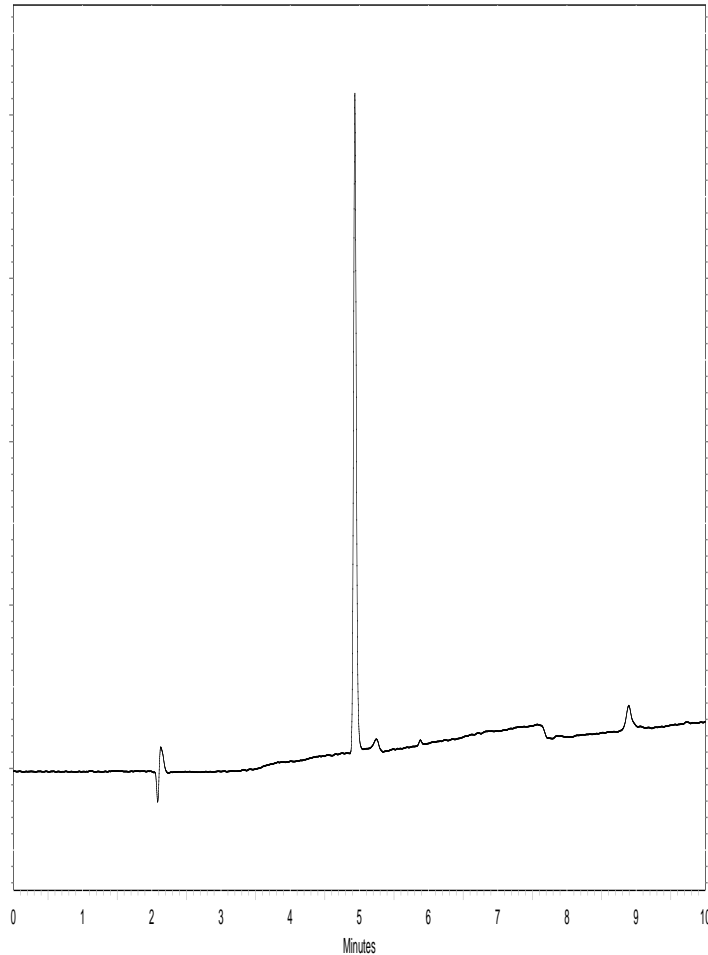


Losec



Column : **3 μ Fortis C18 100x4.6mm**
p/n : **F18-050503**

Mobile Phase: **A: H₂O + 0.1% Formic acid**
B: ACN + 0.1% Formic acid

Gradient: **10-100% in 10 minutes**

Flow : **1.0ml/min**
Temp : **20°C**
 λ : **254nm**

1. Omeprazole