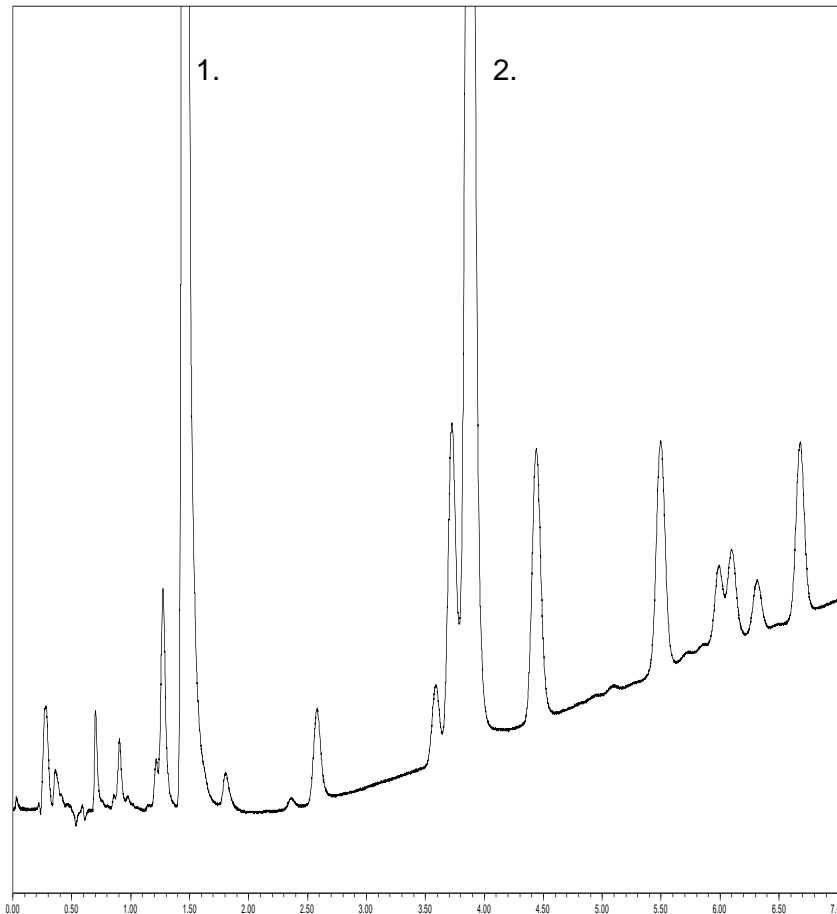


# Lavender Oil



Column : **1.7 $\mu$  Fortis C18**  
**50x2.1mm**

p/n : **F18-020301**

Mobile Phase: **A: H<sub>2</sub>O**  
**B: ACN**

Gradient: **60-100% B in 10 minutes**

Flow : **0.3ml/min**  
 $\lambda$  : **300nm**

**1. Linalool**  
**2. Linalyl acetate**