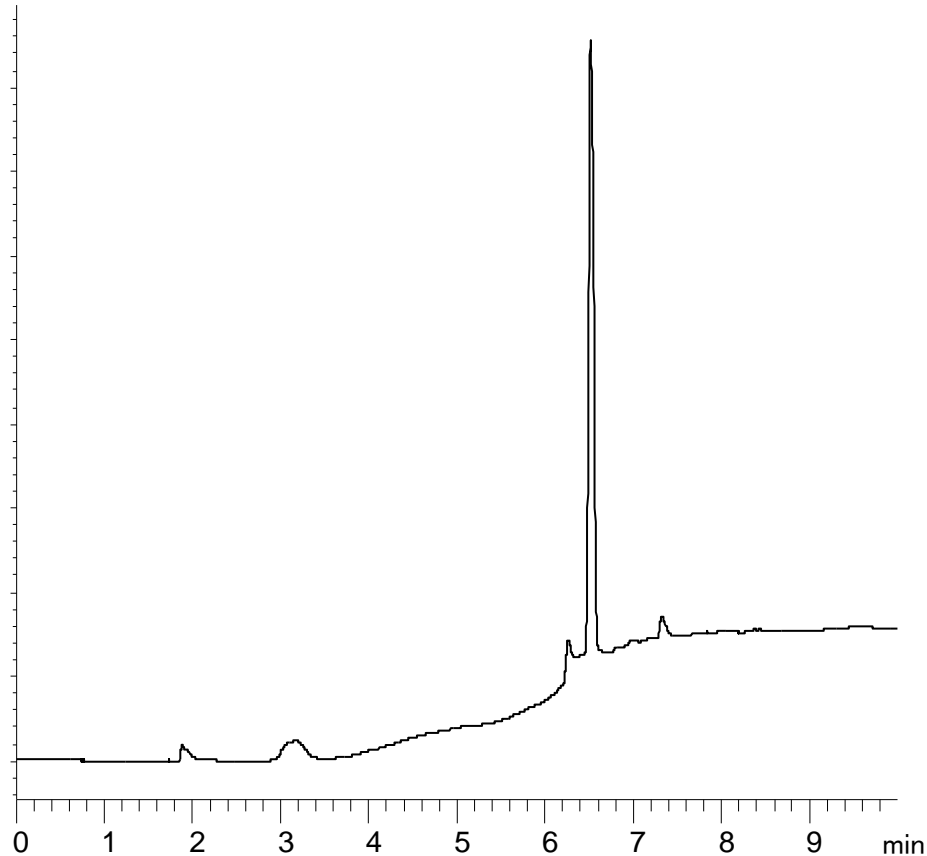


Lansoprazole



Column : **2.6 μ SpeedCore C18**
150x4.6mm

p/n : **SP18-050726**

Mobile Phase:

A: H₂O + 0.1% Formic acid

B: ACN

Gradient: **5-95% B in 5 minutes – hold**
for 10 minutes

Flow : **1.0ml/min**

Temp : **25°C**

λ : **254nm**

1. Lansoprazole