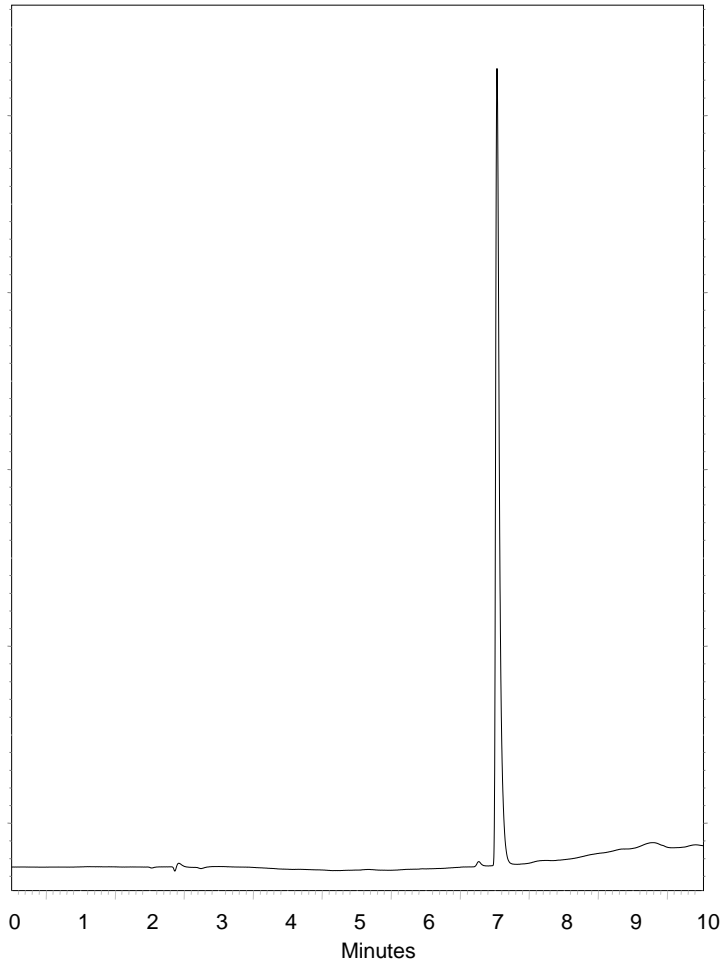


Lamictal



Column : **5 μ Fortis C8 150x4.6mm**
p/n : **F08-050705**

Mobile Phase:

A: H₂O + 0.1% Formic acid

B: MeOH + 0.1% Formic acid

Gradient: **10-90% in 10 minutes**

Flow : **0.7ml/min**

Temp : **25°C**

λ : **254nm**

1. Lamotrigine