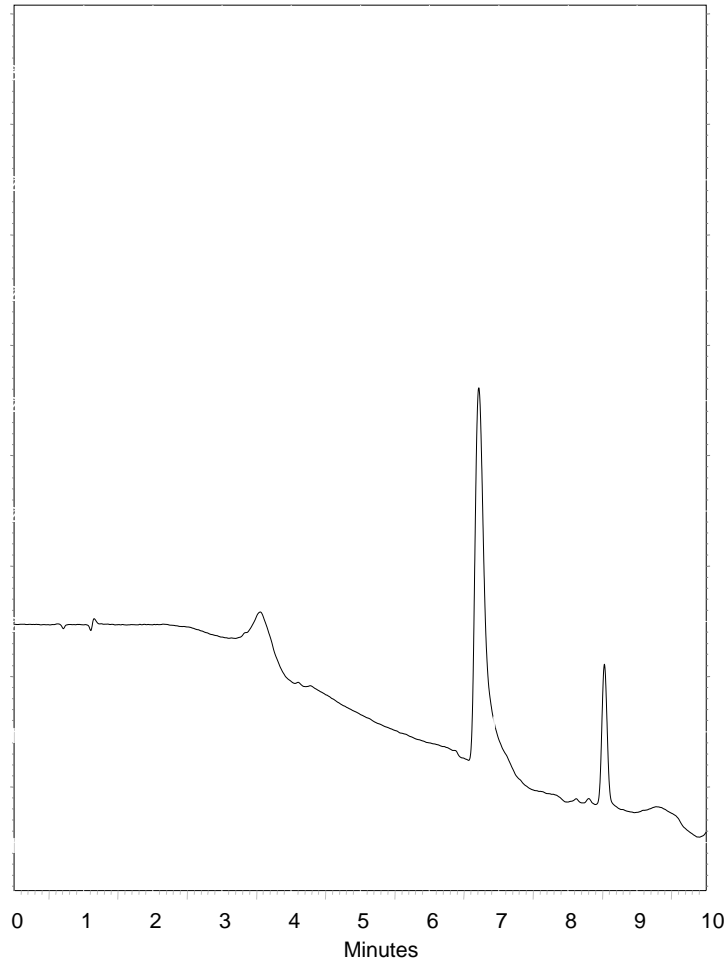


Citalopram



Column : **5 μ Fortis C18 50x4.6mm**
p/n : **F18-050305**

Mobile Phase: **A: 50mM NH₄OAc**
B: ACN

Gradient: **10-100% in 10 minutes**

Flow : **1.0ml/min**
Temp : **20°C**
 λ : **230nm**

1. Citalopram