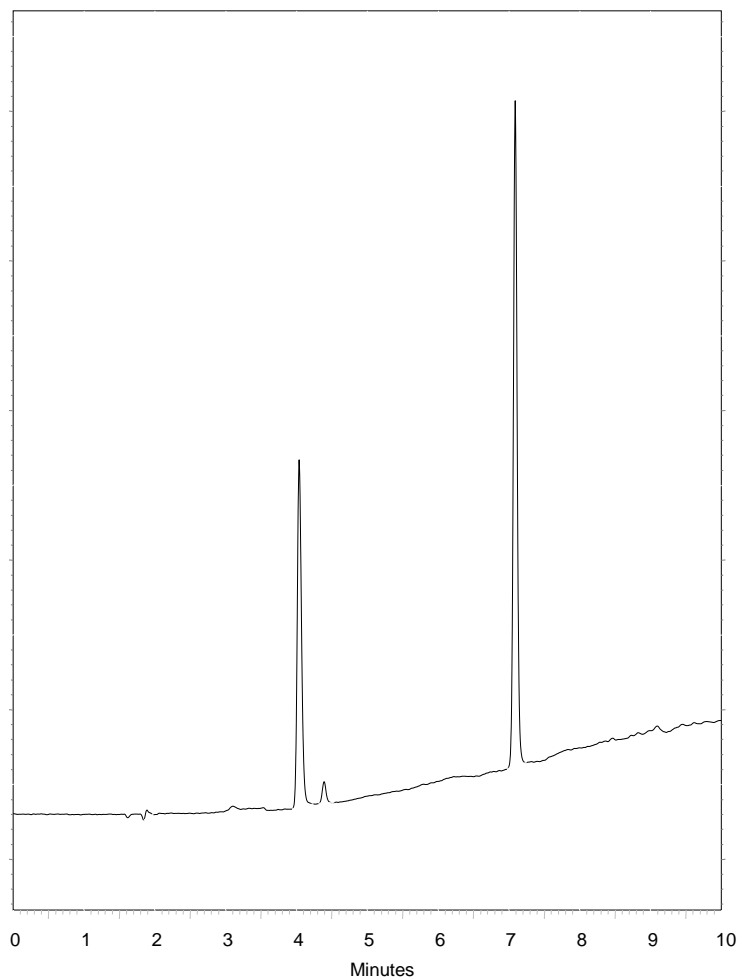


Chloramphenicol Eye Drops



Column : **Fortis H₂O 100x4.6mm 5μ**

p/n : **FHO-050505**

Mobile Phase:

A: H₂O + 0.1% Formic acid

B: ACN + 0.1% Formic acid

Gradient: **5-70% in 10 mins**

Flow : **1.0ml/min**

Temp : **20°C**

λ : **254nm**

1. Chloramphenicol